

MARKINGS

WHORLS

Where the hair growth changes direction.
Unique in each horse and used for identification
purposes.



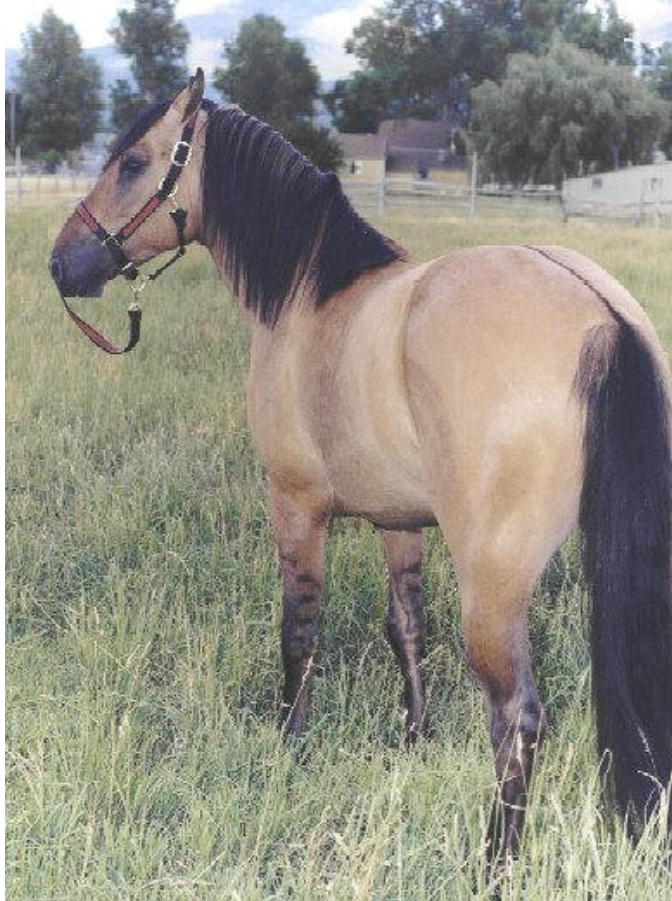
BLOODY SHOULDER

Seen in flea-bitten greys – common in Arabians. Where the spots form a large solid patch.



PRIMITIVE MARKS

Seen in duns mostly. Consist of dorsal stripe down the middle of the back, zebra stripes on the legs, and often dark patches across the shoulder and lower neck, and the face.



FACE MARKINGS

BLAZE

Wide white marking down the face, that doesn't go past the nasal bone.



STRIPE or STRIP

Like a blaze, but very narrow.



STAR

White patch of any shape that's on the forehead.



SNIP

White spot between the nostrils.

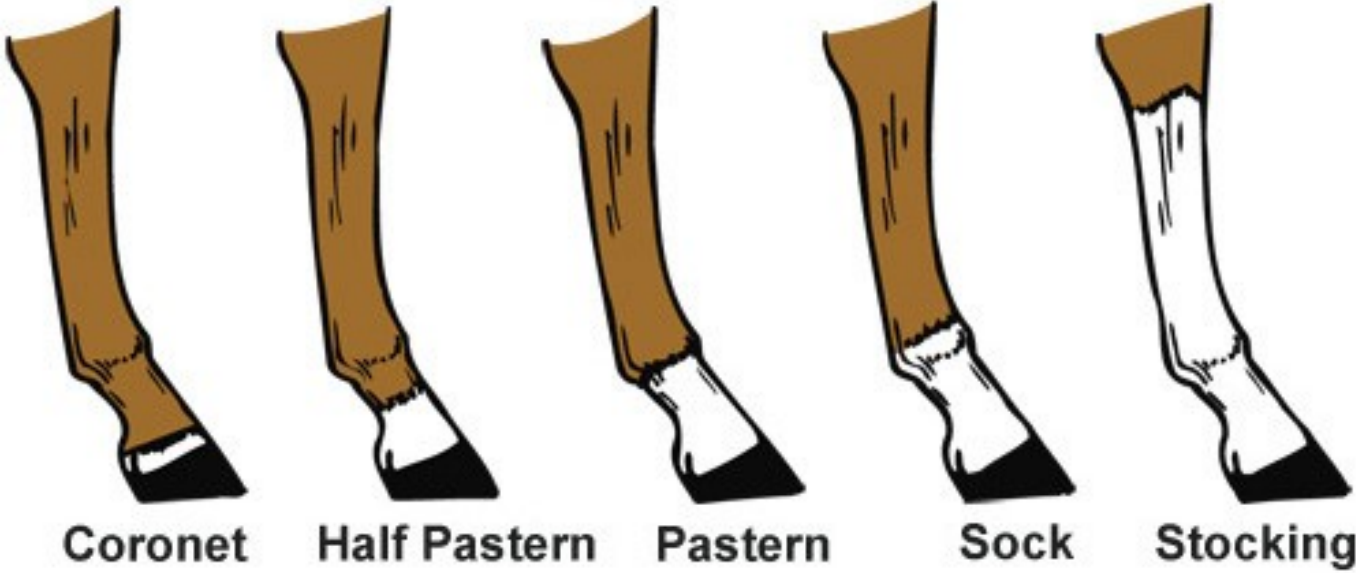


BALD FACE

Entire white face that extends beyond the nasal bone and eyes, to the side.



LEG MARKINGS



Ermine spots

Dark spots on white leg markings.



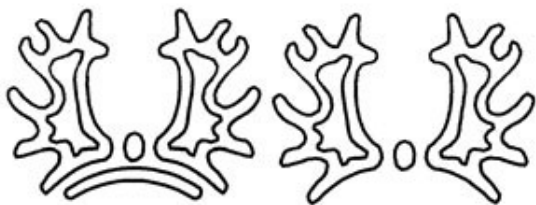
BRANDS

Hot brands are burned into a horse's skin, quickly, with a hot metal instrument. This method is used in the west by ranchers, to identify their horses with their specific ranch brand. It is also used in Australia to identify where and when a thoroughbred was foaled. In Argentina, they are branded on the buttocks.

Lipizzaners are branded according to which stallion and mare they trace their ancestry to, and sometimes where they were born.

Warmbloods are usually branded according to what breed they are.

Most hot brands are done on the left haunch. Others are done on the shoulders (Australia), buttocks (Argentina), and back (Lipizzan).



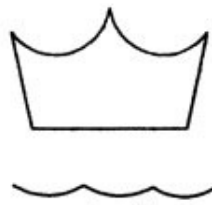
American Trakehner



Trakehner



German Oldenburg



Danish Warmblood



Friesian



Swedish Warmblood



Westphalian



US Hanoverian



German Hanoverian



International Sporthorse



Belgian Warmblood



Dutch Warmblood



Holsteiner



American Warmblood



Oldenburg Horse Breeders Society

FREEZE BRANDS

Freeze brands are done with a branding iron that is chilled to -250 degrees in liquid nitrogen, or -160 in dry ice and alcohol. It makes the hair grow in white. On white horses, it's left on longer, so the hair doesn't grow back at all.

Wild mustangs are freeze-branded when they are rounded up and adopted out. Other breeds and ranch horses can also be freeze-branded.



SCARS

Scars are also considered markings. They can be used to identify a horse.

